



Majestic Meadows

The Moxley Family
2405 Pfefferkorn Road • West Friendship, MD 21794
443-250-9932 • mmoxley@sdcgroupp.com • www.carcassbulls.com

One phenomenal producer!



Majestic Meadows

Majestic Blockanna 715

#1027542

CED 4 BW -0.5 WW 35 YW 62 Milk 19 TM 37 ME 1 HPG 10 CEM 1 Stay 8

Marb 0.13 REA 0.06 Fat 0.00

BW: 69 lbs. Adj. WW: 604 lbs.

Talk about a good producer! If three's a charm look out! Her first two natural calves are nothing short of phenomenal. The only downfall we see is she can't be bred to Lightning as she is his sister. But that's ok - just about anything else will work.

Below is daughter, Majestic Blockanna X121.

BFCK Cherokee Cnyn 4912
LCC Major League A502M
KRN Reba's Robin

BUF CRK CHF 824-1658
MRM 1431 8611 9109

LMAN Robin Hood 1174B
KRN Rebella 805/314

Majestic Blockanna 715

Whitestone Sizabull M131
Whitestone Blockanna R227
Blockana 0143 of WSRA

Sitz Traveler 8180
Green Garden Susie 1246 S1
Leachman EBV 6703
Feddes Blockanna 807



She is stacked with carcass traits.



Majestic Blockanna 716

Majestic Meadows

#1129027

CED **7** BW **-0.2** WW **34** YW **59** Milk **16** TM **33** ME **2** HPG **8** CEM **-3** Stay **7**

Marb **0.08** REA **0.22** Fat **0.00**

BW: **85 lbs.** Adj. WW: **648 lbs.**

Majestic Blockanna 716 is currently in our export program at Trans Ova Genetics Center, Sioux Center, Iowa. Her wonderful pedigree is stacked for carcass traits and she is a half sister to Majestic Lightning 717. Look for great things from this female.

Below is one of her daughters

BFCk Cherokee Cnyn 4912
LCC Ribeye A133L
Lchmn Larkaba J1263

BUF CRK CHF 824-1658
MRM 1431 8611 9109
Red CR Top 54D
Leachman Larkaba F1275

Majestic Blockanna 716

Whitstone Sizabull M131
Whitstone Blockanna R227
Blockana 0143 of WSRA

Sitz Traveler 8180
Green Garden Susie 1246 S1
Leachman EBV 6703
Feddes Blockanna 807



You'll never find a better udder or foot.



Majestic Meadows

Whitestone-Blockanna R227

#940078

CED 7 BW -0.4 WW 28 YW 53 Milk 17 TM 32 ME -1 HPG 7 CEM 5 Stay 4

Marb 0.15 REA -0.20 Fat 0.00

BW: 70 lbs. Adj. WW: 743 lbs. Adj. YW: 881 lbs.

Whitestone Blockanna R227 is best known as the dam of Majestic Lightning 717 SGMR. She is pictured here with a calf at side at 6 years of age – you'll never find a better udder or foot.

Sitz Traveler 8180
Whitestone Sizabull M131
Green Garden Susie 1246 S1

G D A R Traveler 71
Sitz Everelda Entense 1137
Gardens Transition 7205 S1
Green Garden Susie 9118 S2

Whitestone Blockanna R227

Leachman EBV 6703
Blockana 0143 of WSRA
Feddes Blockanna 807

Leachman EBV 3531
Leachman Vanesa 5900
LMN Impressive Rob1095B
Fed's Blockana 692

Hopes and dreams for the future.



INTERNATIONAL
LIVESTOCK
EXPOSITION

2008



Majestic Meadows

Whitstone Serabelle W118

#1159206

CED **4** BW **0.7** WW **44** YW **85** Milk **14** TM **36** ME **10** HPG **10** CEM **5** Stay **10**

Marb **-0.09** REA **-0.20** Fat **-0.01**

BW: **83 lbs.** Adj. WW: **743 lbs.** Adj. YW: **1067 lbs.**

Whitstone Serabelle W118 was a class winner at the NILE and NWSS. She has become a beautiful cow and we hope for big things from her in the future. Her natural bull calf by Super Vision has been retained.

They say the dapples mean she's fertile.

Leachman Cowboss 1129G
LCC Vaquero 1412J
Park Miss Wideload F628

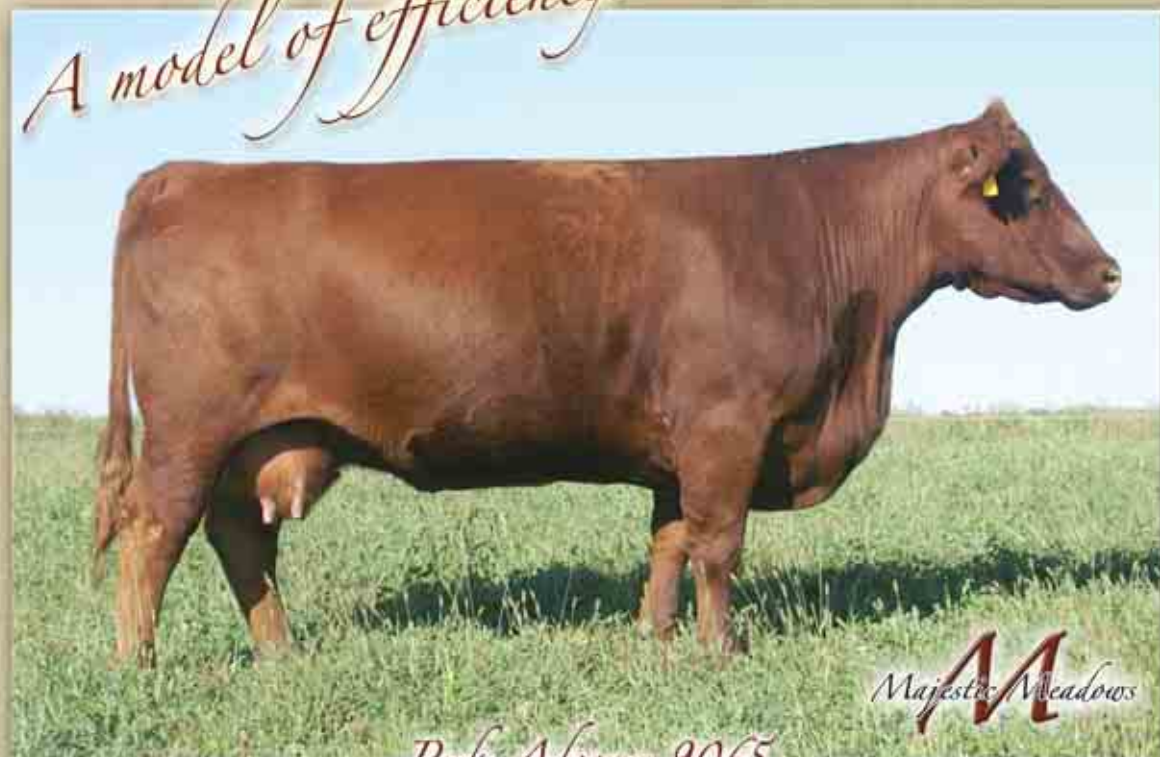
LMAN Robin Hood 1174B
LMAN Abigail B1174
Lchmn Wide Load 1061C
Park Mercedes C235

Whitstone Serabelle W118

BJR Monu 4X-303
Whitstone Serabelle R080
WSRA Serabelle 505N

Red SSS Monu4X 237C
RCRA Samantha
Holden Hi Ho 574
LMAN Serabelle 9283

A model of efficiency.



Majestic Meadows

Perks Advance 9065

#689730

CED 3 BW 2.1 WW 35 YW 54 Milk 13 TM 31 ME -7 HPG 7 CEM 4 Stay 7

Marb -0.03 REA -0.05 Fat -0.01

BW: 65 lbs. Adj. WW: 467 lbs.

RBJR Advance A709
T3 Chief 2887
Roy Advance A209

Bieber Chielton 2803
Bieber Hannah 2887
JKG Milk Man Y962
Pamela 1326

Perks Advance 9065

HMV Super Staress 505
87 VRR Super Star
RR's Patty 994

Continental Allstar
VRR Christy
Leachman Patriarch
RR's Miss Cinema 532

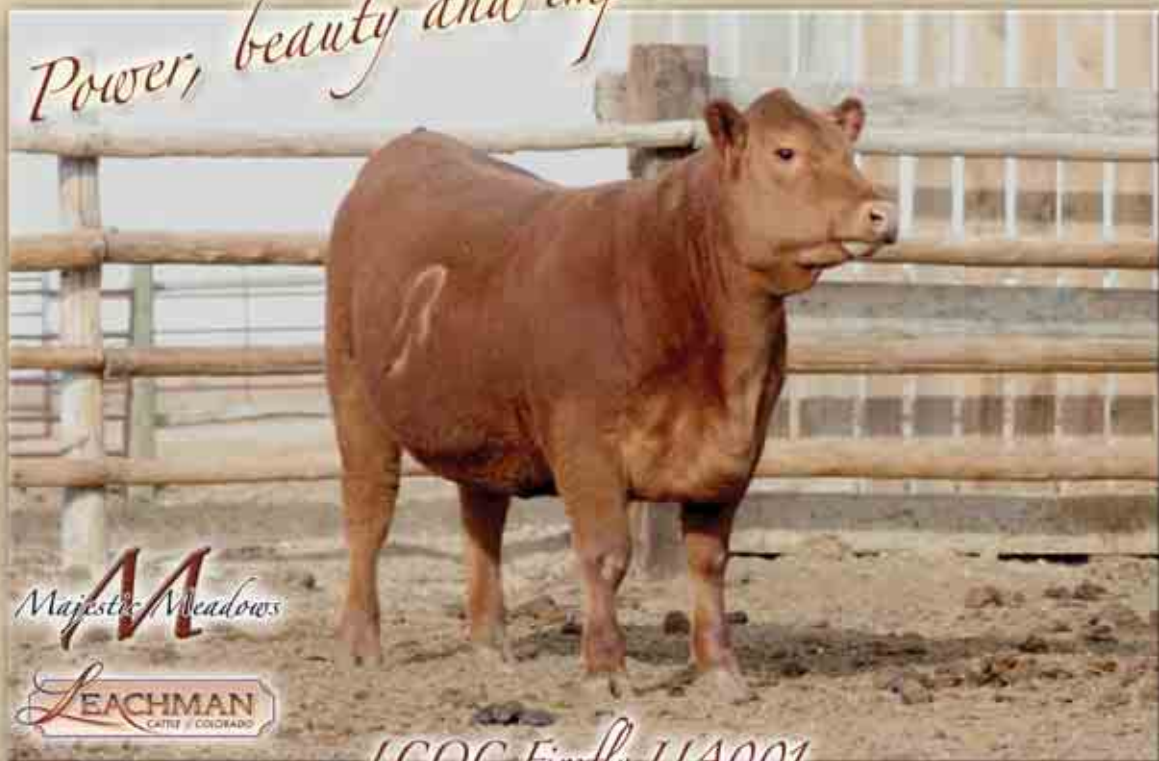
9065 is the kind of cow that just doesn't miss. She is the model of efficiency at 10 years of age and has a -7 ME EPD.

She has produced numerous class winners and high-selling bulls for both Perks Ranch and Coley Cattle Co. Most noteworthy, she is the dam of Coley's Birmingham 622S, the high-selling bull at the 2007 Mile High Classic.

Her calf this year went on test at Midland as the heaviest Red Angus calf by more than 100 lbs.

She is also famous as the donor dam of the very first Lightning baby born at Majestic Meadows.

Power, beauty and impeccable EPDs.



Majestic Meadows

LEACHMAN
CATTLE / COLORADO

LCOC Firefly UA001

#1276215

CED 7 BW -0.3 WW 32 YW 61 Milk 20 TM 36 ME 10 HPG 8 CEM -2 Stay 14

Marb 0.28 REA 0.32 Fat -0.01

BW: 72 lbs. Adj. WW: 554 lbs. Adj. YW: 1081 lbs.

Firefly defines power, phenotypic beauty and impeccable EPDs, plus a whopping adjusted yearling weight of 1081 lbs. She has been a favorite of visitors far and wide at Trans Ova Genetics Center of Sioux Center, Iowa.

She will play a very big role in the Leachman and Majestic Meadows programs as we expect nothing less than phenomenal bulls from her. She was the high-selling animal at the spring sale at Leachman Cattle of Colorado when she sold for \$10,000 for one-half interest.

Besides that, it is just fun to look at one this powerful – she reminds me of the Bootjack Windsong cow.

Bieber Make Mimi 7249
LCOC High Noon A093R
SRN Hi Dee 3021

BJR Make My Day 981
Bieber Sirena 6708
BFCK Cherokee Cnyn 4912
SRN Hi Dee 1005

LCOC Firefly UA001

Brown Vacation H7106
LCOC Firefly RA144
Lchmn Firefly J1118

Beckton Julian GG B571
Lchmn Flower C1161
BFCK Cherokee Cnyn 4912
Leachman Firefly C1047

We expect great things from her.



TCB Luanna 08S

#1101165

CED -1 BW 1.7 WW 30 YW 56 Milk 12 TM 27 ME 3 HPG 9 CEM 5 Stay 7

Marb -0.14 REA 0.01 Fat 0.01

BW: 75 lbs. Adj. WW: 585 lbs.

4L Super Vision R2292
 Glacier Chateau 744
 4L Mr Rambo R709

LMAN King Rob 8621
 Glacier Rebala
 VDAR Rambo 323
 GMRA Rachille

"Girlie Girl" stood as the Reserve Grand Champion Female at the 2008 NWSS for junior Callie Baer. She was purchased by Whitestone Farms of Va. and Majestic Meadows of West Friendship, Md.

She is a maternal sister to many of TC Reds' great young females in their 2009-2010 string. Sired by 4L Super Vision, we expect great things from her in the future.

She calved just 40 days after this photo was taken. We have 2010 calves from her by Majestic Lightning, Mulberry and King Rob.

TCB Luanna 08S

Meado-West Jazz
Meado-West Luanna
 Meado-West Blanche

FCC Rambo 502
 Panhandle Rita 4091
 TKP Bodacious 693
 MNA Miss Abe 2X 603

Beauty and numbers ... she has it all!



Whitestone Blockanna X234

Majestic Meadows

#1234991

CED **4** BW **1.2** WW **40** YW **73** Milk **20** TM **39** ME **0** HPG **7** CEM **5** Stay **10**

Marb **0.01** REA **0.12** Fat **0.00**

BW: **78 lbs.** Adj. WW: **751 lbs.** Adj. YW: **1060 lbs.**

X234 needs little introduction as she has made many friends as Spring Calf Champion at 2008 NAILE in Louisville and Reserve Spring Calf Champion at 2009 NWSS in Denver.

She is a direct daughter of the famous Feddes Blockanna 807.

X234 has a beautiful rib shape with depth of body, thickness, balanced EPDs and a sweet front. She is free and easy moving with incredible scan data and a birth-to-yearling EPD spread of 1.2 to 73.

Beckton Lancer F442 T
LCC Glance B062M
LCC Rockette K1105

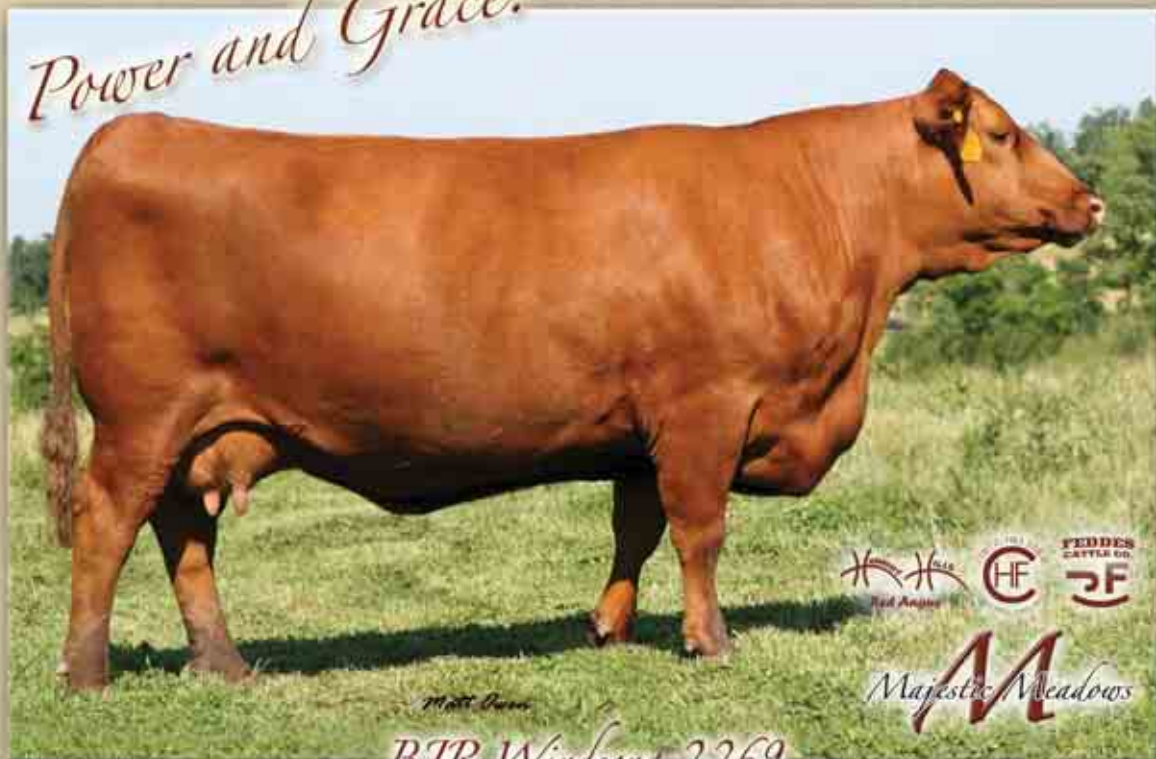
Beckton Lancer T A664
BKT Suffelna A828 DM
Lchmn Bandito Uno1782H
Fischers Rockette 4-13

Whitestone Blockanna X234

LMN Impressive Rob1095B
Feddes Blockanna 807
Fed's Blockana 692

LMAN King Rob 8621
Leachman Firtly 7522
Glacier Logan 210
BJR Blockana 502-5185

Power and Grace.



Matt Owen
BJR Windsong 2269

#886713

CED 2 BW 1.7 WW 39 YW 75 Milk 28 TM 47 ME 1 HPG 12 CEM 2 Stay 12

Marb -0.06 REA 0.05 Fat 0.00

BW: 85 lbs. Adj. WW: 783 lbs.

"She is said to be the most massive, best-footed, widest-muzzled female to come out of the storied Bootjack program. Her dam, Sodak Windsong 7030 (Oscar 4386), had the heaviest weaning weight of any calf - bull or female - in the 1997 calf crop weaning at 783 lbs. and ratioing 126. Many daughters of BJR Windsong 2269 have been retained by Harmony Hills and sons have topped both Neo-Sho and Ludvigson fall bull sales."

- Kerry Paul, Bootjack Ranch

SSS Black Trend 138
Red Brylor New Trend 22
Meadow CK Ms Seaman 13A

V D A R New Trend 315
Red SSS Miss Dynamo 3W
Red Seaman Chief 47Y
Red Meadow CK Princess 10W

BJR Windsong 2269

Sodak Oscar 4386
Sodak Windsong 7030
Sodak Rain Dancer 2068

Sodak Oscar 1397
Sodak 0108
Basin Rainmaker 2135
Sodak 0083

Flawless in every way ... and majestic.



Majestic Blockanna 728 SGMR

#1219505

CED **2** BW **1.5** WW **44** YW **78** Milk **20** TM **42** ME **10** HPG **5** CEM **3** Stay **7**

Marb **0.05** REA **0.14** Fat **0.00**

BW: **66 lbs.** Adj. WW: **748 lbs.** Adj. YW: **1060 lbs.**

What can we say but flawless in every way. She's the 2009 National Champion and her EPDs are unparalleled. She has the most gentle disposition imaginable - she actually sits on command like a dog.

Perks Advancer 9088
 RBJR Advance A709
 HMV Ms Rambo 502

T3 Chief 2887
 Roy Advance A209
 VDAR Rambo 323
 Hi Pock Performiss

Majestic Blockanna 728 SGMR

Majestic Blockanna 715
 LCC Major League A502M
 Whitestone Blackanna R227

BFCK Cherokee Cyn 4912
 KRN Reba's Robin
 Whitestone Sizabull M131
 Blockana 0143 of WSRA

The next great herdsire producer.



IDLE HOUR FARM
Mr. and Mrs. J. Hunter Webster
St. Thomas, PA

Majestic Meadows

LSF Rebella R5008 U8245

#1248586

CED **6** BW **-2.5** WW **33** YW **60** Milk **20** TM **37** ME **11** HPG **14** GEM **-1** Stay **8**

Marb **0.28** REA **0.12** Fat **0.01**

BW: **65 lbs.** Adj. WW: **586 lbs.** Adj. YW: **919 lbs.**

Like many Feddes Big Sky R9 daughters, she is a beautiful female. We fell in love with this one for her muscle shape. We believe she is only one mating away from the next great herd sire, and we will not want to sell her daughters.

She is moderate with that extra fleshing ability. Her dam is a \$20,000 Combination daughter and her granddam is the \$12,500 full ET sister to LCC Major League A502M.

Look her up in Denver – you'll be impressed.

Feddes Big Sky R9
Bieber Make Mimi 7249
Feddes Lakina 310

BJR Make My Day 981
Bieber Sirena 6708
Lchmn Grandcanyon 1244G
Feddes Lakina 954

LSF Rebella R5008 U8245

LSF Rebella 102-502 R5008
LSF Combination A301M
RSLND Rebella 102-502

Lchmn Top Brass 1049H
WHF Lass 27G-29J
BFCK Cherokee Cnyn 4912
KRN Reba's Robin

Great Cows Prevail!!



EE 4286 OF IDEAL 2240 125



IDEAL 4465 OF 6807 4286



SINCLAIR LADY 2P61 4465



Duffell



Whitestone Advocate

• The top-selling bull of the 2009 Whitestone Pasture Performance-Tested Angus Bull Sale, with an IMF ratio of 141. He is sired by SS Objective T510 0126 from the Whitestone donor, Sinclair Lady 2P61 4465, who is the top income-producing daughter of the feed efficiency matriarch, Ideal 4465 of 6807 4286.

Sisters to Whitestone Advocate sell
Saturday, October 17, in the
Whitestone Brand of Quality Angus Sale.

Calves: 00/01/2008				Bull: 10090113				Tattoo: X143			
3.5 Objective T510 0126 (AMF)	40 H O Transfer (6807 4286)	40 H O Transfer (6807 4286)	40 H O Transfer (6807 4286)	40 H O Transfer (6807 4286)	40 H O Transfer (6807 4286)	40 H O Transfer (6807 4286)	40 H O Transfer (6807 4286)	40 H O Transfer (6807 4286)	40 H O Transfer (6807 4286)	40 H O Transfer (6807 4286)	40 H O Transfer (6807 4286)
15.2	13.2	13.2	13.2	13.2	13.2	13.2	13.2	13.2	13.2	13.2	13.2
1.4	1.4	1.4	1.4	1.4	1.4	1.4	1.4	1.4	1.4	1.4	1.4
1.4	1.4	1.4	1.4	1.4	1.4	1.4	1.4	1.4	1.4	1.4	1.4

ABS Global
DeForest, WI

FCC

Fleming Cattle Company
Aldie, VA

Mayfield Auction
West Friendship, MD

Mercedez Farms
Scottsville, VA

Once Day
Angus
Aldie, VA

Quincy Hill Farm
Trevilians, VA

Rainbow Ridge
Farm
Glasgow, VA

Whitestone Farm
Aldie, VA

George W. Lemm • Marisa M. Robertson • Mark Duffell
PO Box 570, Aldie, Virginia 20105
(703) 327-4863 Office • (703) 327-4777 FAX
www.whitestonefarm.com • (703) 930-1841, Mark's Cell
whitestonefarm@earthlink.net

Whitestone Farm

BOYD Sharpshooter 7079



Added Power
Extra Rib
and Capacity
Flawless Structure
Great Disposition

Mark Sneed

Calved: 9/2/2007 Bull 19990212 Tattoo: 7079

♀ S A F 198 Band 9779 (WW)
BOYD ON TARGET 1083
1/25/2007 • Boyd Farm Lady 7995
♀ S F New Design 516 (WW)
HAZY BROOK EVERETTISE 3054
1/14/2007 • Hazy Brook Eve Livestock 309

♀ Fred Vine Band 506 (WW)
♀ S A F Royal Lane 1002
♀ D H D Tractor 6007 (WW)
C F F Forward Early 574
♀ V S A N New Breed 215 (WW)
6/6 Blackcap Express 76
48 The Evolution EXT (WW)
7/27 Everett's Eclipse 1137

CEB	BW	WW	YW	MBW	MMB	SS	MI	MR	MRB	
+6	.28	+2.1	.35	+5.1	.28	+9.5	.25	+2.2	.20	+4.0
+26.10		+33.79		+23.95		+48.33				+1.0

Backed by proven strong maternal traits from a dam recording WR 340102 and YR 340103 and from a cow family that continues to stand the test of time

SHARPSHOOTER exemplifies the high quality genetics combined with proven performance that makes him one of the most unique herd sire prospects available today.

BW: 74 lbs. • Adj. 205: 726 lbs. • Adj. 365: 1134 lbs. • Scrotal: 40 cm.

For semen, contact
800-888-4077



MAJESTIC MEADOWS

West Friendship, MD
443-280-9932

FOUR SONS FARM

Cynthiana, KY
859-221-5196

TROWBRIDGE ANCUS
Ghens, NY • 518-369-6584

SUNSET VALLEY ANCUS

Gallipolis, OH
740-379-2117

LONE OAKS ANCUS

Middleton, TN
731-376-0011

Deer Valley FARM



11 Fred Clark Lane • Fayetteville, TN 37334
931-703-6330

BOYD BEEF CATTLE

6077 Helena Rd. • Mays Lick, KY 41093
606-584-5194

Why we show cattle ...



Majestic Lightning 717 SGMR

CEU BW WW YW M TM ME HPG CEM SI MA RE F
 5 0.9 35 70 23 40 0 9 5 6 0.10 0.00 0.01
 • Grand Champion Bull, 2008 Eastern National Show
 • 2006 National Show Grand Bull, NILE, Billings, MT
 • 2008 Grand Bull, NAILE, Louisville, KY
 • 2009 Grand Champion Bull, NWSS, Denver, CO



Whitestone Blockana X234

Out of Fiddle-Blockana 807, sired by LCC Grand
 CED BW WW YW M TM ME HPG CEM SI MA RE F
 4 1.2 40 73 20 39 0 7 5 10 0.01 0.12 0.00
 • 2006 Calf Champion, NAILE, Louisville, KY
 • 2009 Reserve Calf Champion, NWSS, Denver, CO



Majestic Blockana 728 SGMR

She is sired by Perks Advance 9088 and her dam is a maternal
 sister to Lightning sired by LCC Major League A502M.
 CED BW WW YW M TM ME HPG CEM SI MA RE F
 2 1.5 44 78 20 42 10 5 3 7 0.05 0.14 0.01
 • 2008 Grand Female, Eastern National Livestock Show

Since cattle have been registered, pedigrees and the exhibition of cattle have served as a method by which cattle can be evaluated. Since this time, various methods for evaluating cattle have come to assist breeders in the often difficult task of objectivity within one's own breeding program. Total Herd Reporting and EPDs are such tools. Ultrasound is a technologically advanced tool that tells us what's under the skin. DNA testing for markers is so technologically advanced it tells us what the heritable traits will be passed on. All of these combined provide the modern seed-stock producer with a wealth of information and an unprecedented opportunity to improve our breed.

While on a per-head basis the show ring is by far the most expensive and labor intense, it is tried and true. There are a lot of "show cattle" that when hung up on a hook do not cut well. There are plenty "performance cattle" that lack proper structure and phenotype. There are "carcass cattle" that are light muscled. There are cattle with great Genestar results that may or may not turn those traits into profitability.

At the end of the day we are ambassadors for our breed. Often new breeders, juniors and breeders from abroad only see our breed at major shows. Balanced traits means more to us than what's on the registration paper, the ultrasound data or the DNA card. We will continue to employ all of these methods to explore our "Pursuit of Perfection."

Our charge at Majestic Meadows is to breed Angus cattle that
 "Look as good as they perform."

Majestic Meadows

The Moxley Family • mmoxley@sdcgroup.com
 443-250-9932 • 2405 Pfefferkorn Road • West Friendship, MD 21794
www.carcassbulls.com

Everything you need ... in one package!



Majestic Meadows

von Forell Family

Duffell

Majestic Lightning 717 SGMR

#1155775

CED **5** BW **-0.9** WW **35** YW **70** Milk **23** TM **40** ME **0** HPG **9** CEM **5** Stay **6**
 Marb **0.10** REA **0.00** Fat **0.01** Adj. YW **1410 lbs.** Frame **6.0**
 2-Yr-Old Weight: **2080 lbs.** 2-Yr-Old Hip Ht: **55.5"** 2-Yr-Old SC: **43**

Semen available through these companies:



Bull Barn Genetics • 800-535-6173
www.bullbarn.com



Cattle Visions
 856-839-3353
www.cattlevisions.com



Bovine Elite, LLC
 800-796-4066
www.bovine-elite.com



Angus Semen Service
 800-888-4077
angussemen.com



Universal Semen Sales
 800-227-6774
www.universalseminsales.com

LCHMN Grand Canyon 1244G
 Whitestone Cayenne 423R
 Feddes Blockanna 807

BUF CRK CHF 824-1658
 KRN Reba's Robin
 LMN Impressive Rob1095B
 Fed's Blockana 692

Majestic Lightning 717 SGMR

Whitestone Sizabull M131
 Whitestone Blockanna R227
 Blockanna 0143 of WSRA

Sitz Traveler 8180
 Green Garden Susie 1246 S1
 Leachman EBV 6703
 Feddes Blockanna 807